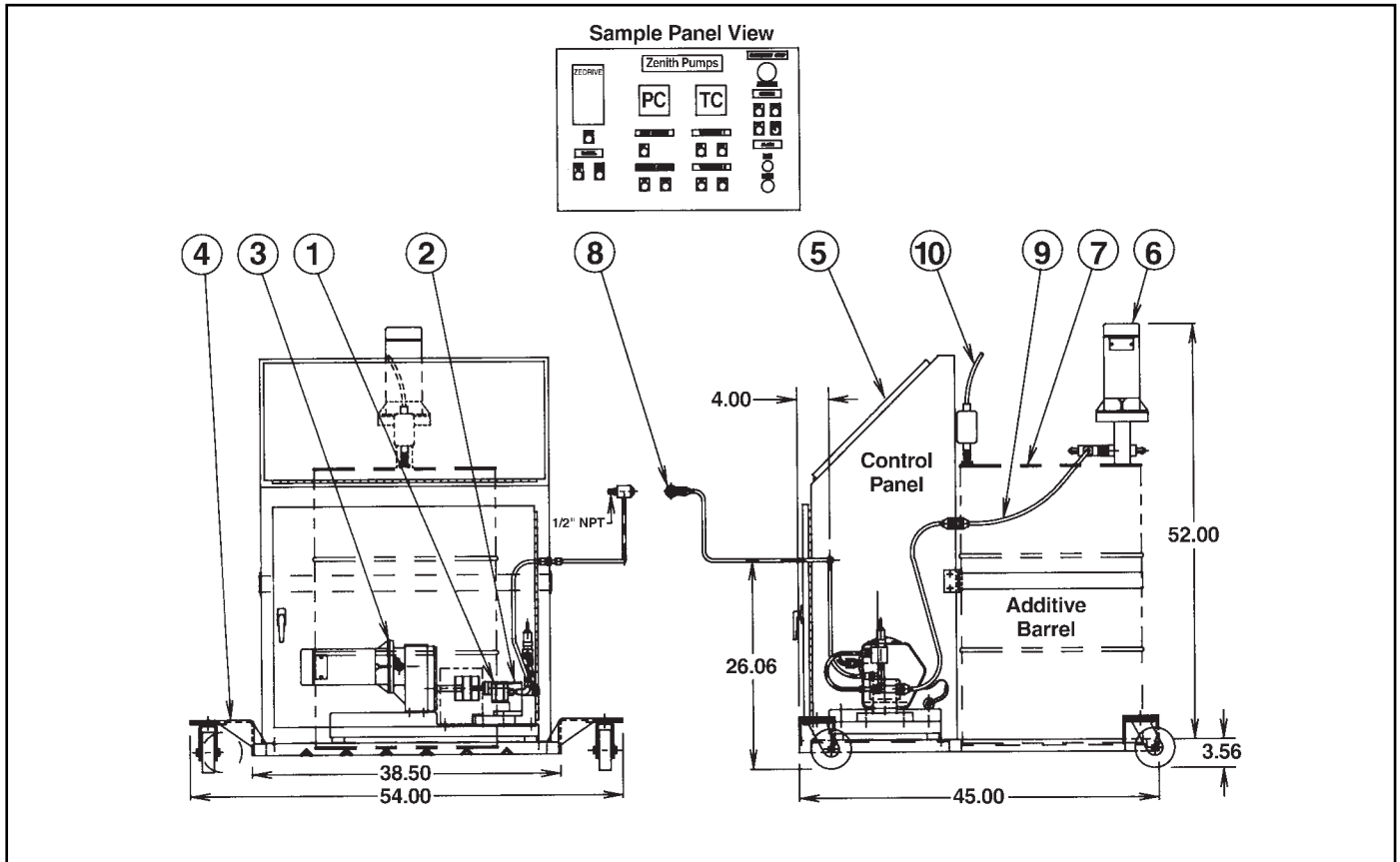


# Zenith® Pumps EAZ-60

## Additive Injection System

Engineering Data Sheet No. EAZ-60



### Bill of Materials

ITEM	DESCRIPTION
1	ZENITH METERING PUMP
2	ZENITH MOUNTING SADDLE
3	ZENITH MOTOR DRIVER ASSEMBLY
4	CART: WITH SWIVEL AND LOCKING CASTERS
5	PROCESS CONTROL PANEL
6	BARREL PUMP
7	ADDITIVE BARREL (NOT INCLUDED)
8	DISCHARGE PIPING
9	INLET PIPING
10	BARREL LEVEL SENSOR

# EAZ-60 Additive Injection System

## Zenith® Pumps

The EAZ-60 Additive Injection System uses Zenith's advanced metering pump technology for the continuous metering of additives to a mainline process. From plastics extrusion to food processing, this prepackaged system is unmatched in its ability to provide precise and repeatable control of additives. The heart of the system is a carefully selected Zenith precision metering gear pump outfitted with Zenith's top-of-the-line ZeDRIVE™ 2000

microprocessor-based closed-loop control, which provides the following benefits:

- Metered flow with less than 1 percent variation
- Pressures to 4,000 psig
- Viscosity to 5,000 cps (optional to 60,000 cps)
- Four programmable setpoints for preset ratios
- Analog input signal capability for process follower mode

## Standard System

- Drum pump for 55-gallon drum
- Zenith HQ motor driver assembly with 1/2 or 1 HP DC motor
- Zenith precision metering gear pump
- Discharge pressure relief valve (feeds back to inlet)
- Inlet pressure regulating valve
- High-pressure flexible tubing and quick disconnects
- Process control package consisting of the ZeDRIVE 2000 speed control, barrel pump drive, inlet pressure control, audible and visual alarms with shutdown, bypass and silence circuitry
- Structural steel skid for controls, HQ and barrel support

## System Options

- Barrel level control
- Discharge pressure control
- Temperature control for metering pump
- Temperature control for barrel
- Supply tanks and supply pumps
- Locking caster swivel wheels for skid mobility
- Air powered barrel pump for viscosities to 60,000 cps
- Additional equipment upon request; **we will design to suit**  
(All process control options have alarm and safety shutdown capabilities)

Please fill out the Application Data Sheet and fax it to our sales department at (919) 774-5952. Use the back page for any additional information or drawings.



**FAILURE, IMPROPER SELECTION OR IMPROPER USE OF THE PRODUCTS AND/OR SYSTEMS DESCRIBED HEREIN OR RELATED ITEMS CAN CAUSE DEATH, PERSONAL INJURY AND PROPERTY DAMAGE.**

This document and other information from Zenith Pumps, its subsidiaries and authorized distributors provide product and/or system options for further investigation by users having technical expertise. It is important that you analyze all aspects of your application and review the information concerning the product or system in the current product catalog. Due to the variety of operating conditions and applications for these products or systems, the user, through its own analysis and testing, is solely responsible for making the final selection of the products and systems and assuring that all performance, safety and warning requirements of the application are met.

The products described herein, including without limitation, product features, specifications, designs, availability and pricing, are subject to change by Zenith Pumps and its subsidiaries at any time without notice.

**Zenith®  
Pumps**

A Colfax Business Unit

ISO 9001: 2000 Registered

**Zenith® Pumps**  
1710 Airport Road  
Monroe, NC 28110

Phone: 704-289-6511 • Fax: 704-289-9273  
zenithpumps@colfaxcorp.com • www.zenithpumps.com

© Copyright 1995 Zenith Pumps EAZ60-EDS 10/04

# EAZ-60 Application Data Sheet

Company _____	Date _____
Address _____	Customer RFQ No _____
_____	Requested Response Date _____
Name _____	Zenith Proposal No _____
Title _____	Zenith Representative _____
Telephone _____ Fax _____	Internal Contact _____

## Fluid/Process Data

Name _____	Viscosity _____ @10 Sec <sup>-1</sup>
Specific Gravity _____	_____ @100 Sec <sup>-1</sup>
	_____ @1000 Sec <sup>-1</sup>
Flow Rate _____	Discharge Pressure _____
Temperature _____	Inlet Pressure Required <span style="background-color: #cccccc; border: 1px solid black; display: inline-block; width: 100px; height: 15px;"></span>

## Equipment Selection All shaded areas to be filled in by Zenith personnel

**ZENITH PUMP**  Speed Range:  to  RPM Torque Req.  In-lbs.

Preferred Materials:  400SS  Tool Steel  Other \_\_\_\_\_

**ZENITH PUMP DRIVE:**  AC  DC Size  HP Reduction Ratio:

Plant Power: V \_\_\_\_\_ pH \_\_\_\_\_ Hz \_\_\_\_\_

**SUPPLY VESSEL:**  55 Gallon Drum (Std-supplied by customer)  
 Other: \_\_\_\_\_

**SUPPLY PUMP:**  Electric Barrel Pump (Viscosities to 5,000 cps) (Std.)  
 Air Driven Barrel Pump (Viscosities to 60,000 cps)  
 Supply Pump (For other than 55 gallon drum)

**SUPPLY VESSEL LEVEL SENSING:**  Electric Control  Site Gage  Both  
 Hi Level Alarm  Audible  Silence  Lo Level Alarm  Audible  Silence  
 Visual  Refill Shutdown  Visual  Refill Start  
 Lo-Lo Level  Audible  Silence  
 Alarm  Visual  Safety Shutdown

### PRESSURE CONTROL:

Inlet:  Pressure Regulating Valve (Std.)  Pressure Control Loop (Std.)  
 Lo Pressure Alarm  Audible  Silence  
 (Inlet)  Visual  By-Pass  Safety Shut-Down After \_\_\_\_\_ Sec Time Delay  
 Discharge:  Pressure Relief Valve-Relieves Back to Inlet (Std.)  Pressure Control  
 Lo Pressure Alarm  Audible  Silence  
 (Discharge)  Visual  By-Pass  Safety Shut-Down After \_\_\_\_\_ Sec Time Delay  
 Hi Pressure Alarm  Audible  Silence  
 (Discharge)  Visual  By-Pass  Safety Shut-Down After \_\_\_\_\_ Sec Time Delay

### TEMPERATURE CONTROL:

Pump Temperature Control  Supply Vessel Temperature Control  
 Rheostat  Panel  
 Lo Temp. Alarm  Audible  Silence  Lo Temp. Alarm  Audible  Silence  
 Visual  Visual  
 Hi Temp. Alarm  Audible  Silence  Hi Temp. Alarm  Audible  Silence  
 Visual  Visual

### DISCHARGE LINE:

Line Size \_\_\_\_\_ Connection Size \_\_\_\_\_

